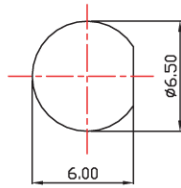


## SMA BULKHEAD FEMALE TO U.FL-LP-068(O.D.: 1.13MM)



**D-CUT**



RECOMMENDED MOUNTING HOLE FOR CUSTOMER DRAWING

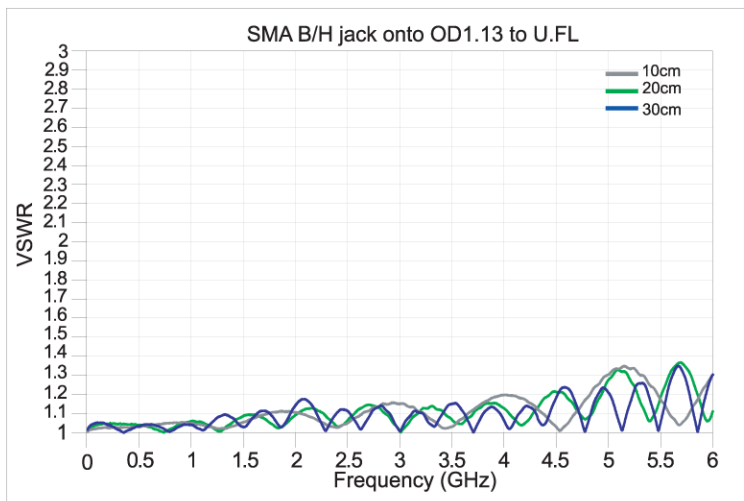


Length

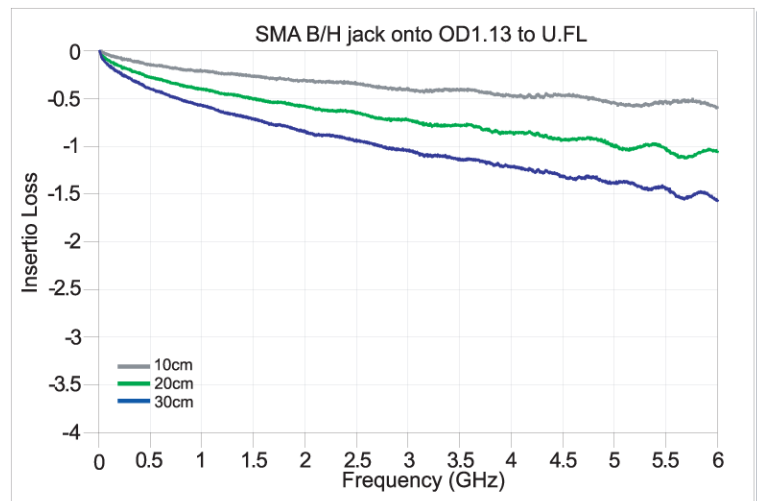
ELECTRICAL SPECIFICATIONS	MECHANICAL SPECIFICATIONS
Impedance Nominal: 50 Ohms	Cable Max. DIA: 1.13mm
Capacitance, Nominal: 3.43dB/m(at 3GHz); 5.13dB/m(at 6GHz)	Min Bend Radius; 12mm
Insulation Resistance: 500M Ohms min	Temperature Range: -40C to +90C
Dielectric Withstanding Voltage: 60 VAC(rms)	Mating Torque: 2.5mm Max

SMA B/H jack onto OD1.13 cable to U.FL											
Test data		VSWR(max:1)					Insertion Loss (dB)				
P/N	Cable Length	Use band									
		GSM/3G*		GPS		ISM band		GSM/3G*		ISM band	
		2.4-2.5GHz	3.4-3.7GHz	4.9-5.875GHz	2.4-2.5GHz	3.4-3.7GHz	4.9-5.875GHz				
1-2-UFL-010	10cm						-0.25	-0.32	-0.4	-0.50	-0.65
1-2-UFL-020	20cm	1.2:1	1.2:1	1.25:1	1.25:1	1.45:1	-0.45	-0.60	-0.7	-0.85	-1.25
1-2-UFL-030	30cm						-0.62	-0.80	-1.0	-1.25	-1.65

### VSWR



### Insertion Loss



\*GSM is including 890-960MHz, 1880-1900MHz, therefore our GSM/3G testing frequency covers up to 2GHz

For customized cables, please refer to page or send us your inquiry to [wireless@grand-tek.com](mailto:wireless@grand-tek.com)

U.FL is a registered trademark of Hirose.

Visit our website at <http://www.grand-tek.com>