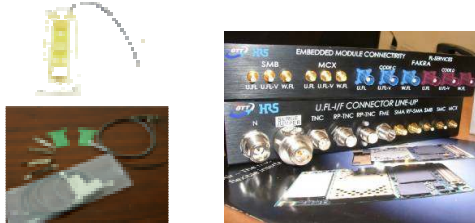


1 Embedded Antenna & RF Jumper



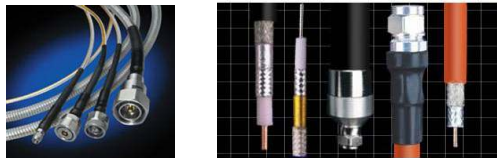
100% Original HRS U.FL



2 External RF Assy Solution



Full Range LMR-400 Variants
 LMR-400 Standard / LMR-400 Lite
 LMR-400 DB / UF / FR / LLPL
 SilverLine Testing Cable

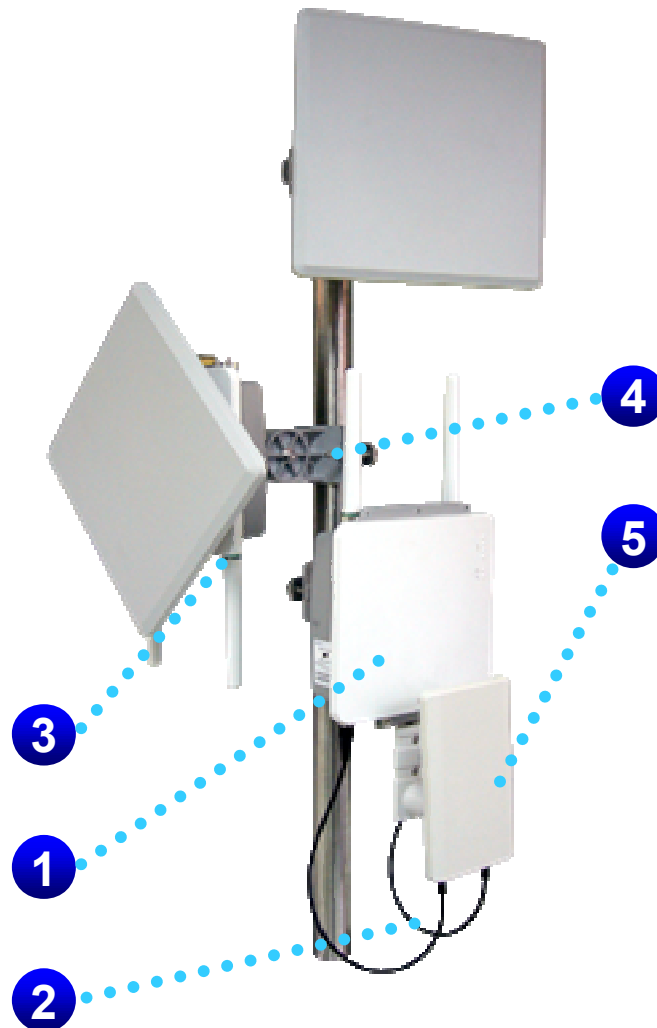


3 IP67 Waterproof Connectivity

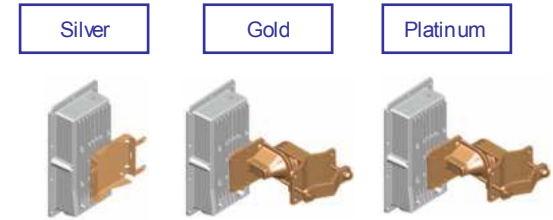
Front lock connector



Rear lock connector - Anti-Vandalism Design



4 Mount Variants

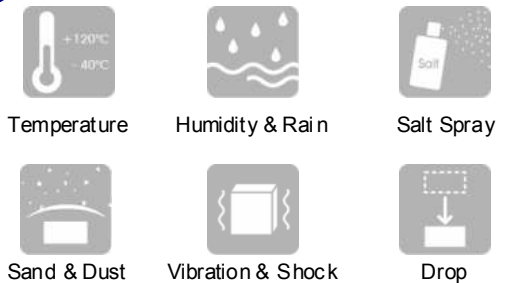


5 Mechanical Scheme



ODU Dimension:
 215(L) x 122(W) x 66(H) mm
Inner Space for PCB:
 155(L) x 85(W) x 31(H) mm

6 Reliability Platform



Application-oriented



GTT Wireless Solutions Contents-2009



Global View

Local Touch

WM2M Global Network



- Taipei, Taiwan (HQ)
- Hong Kong
- Shanghai, China
- Stamford, UK
- San Diego, USA
- Singapore



Contact US: Wireless@grand-tek.com

